

TRACKED CARRIERS

700 R PRO



The 700 series from Tracked Carriers is incredibly compact, enabling access to the most restricted sites. Whilst only 600mm wide, the 700 R and 700 PRO models have a generous maximum capacity of 700kg and all the features of the larger models.

Tracked Carriers **R** models use state-of-the-art technology whilst being simple to operate, reliable and easy to maintain.

PRO models offer increased features such as gradient-monitoring, information feedback and a smart auxiliary output, ideal when increased safety measures are required or powered attachments make the job easier.

FEATURES

R MODEL **PRO** MODEL

Efficient direct AC electric drive	●	●
Fully proportional remote control	●	●
Maintenance free AGM batteries	●	●
Hazard lights front and rear	●	●
Switchable motion alarm	●	●
On board diagnostics	●	●
Adaptable and extendable platform	●	●
LCD information screen on remote control	—	●
Smart auxiliary output socket	—	●
Automatic gradient/speed monitoring	—	●
Non-marking tracks	○	○
Wide range of attachments	○	○

○ = Optional ● = As Standard

DIMENSIONS

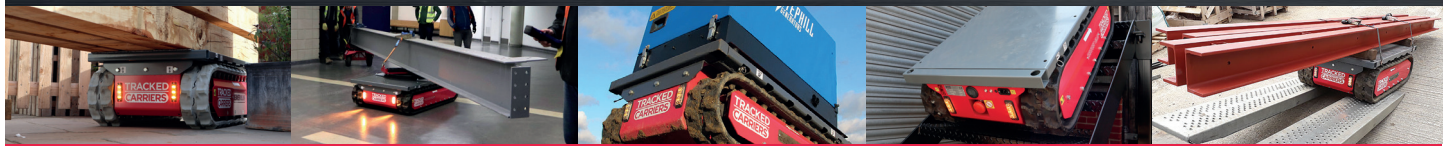
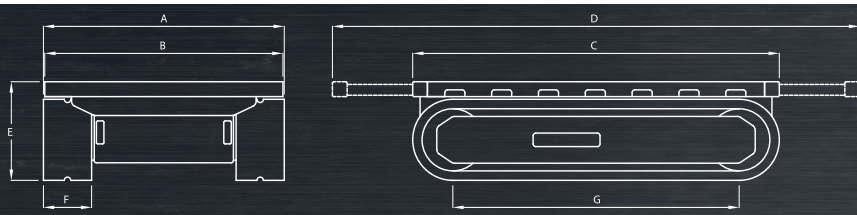
Width overall (A)	600mm
Width of bed (B)	590mm
Length of bed/overall (C)	1050mm
Length extended (D)	1600mm
Height (E)	355mm
Track width (F)	130mm
Track length on ground (G)	760mm
Ground clearance (centre)	55mm

CAPACITIES

Max capacity on level ground	700kg
Max capacity at max gradient	175kg
Max gradient	45°
Max side slope	30°
Max speed	3.5km/h
Unladen weight	250kg

POWER

Power (max)	2.2kW
Voltage	24V
Battery capacity	95Ah
Charger input	110V-230V



Contact Us: Tracked Carriers Ltd. The Forge, 154 Maldon Road, Tiptree, Essex CO5 0PH
 Telephone: +44 (0)1621 810999 E-mail: info@trackedcarriers.co.uk Web: www.trackedcarriers.co.uk